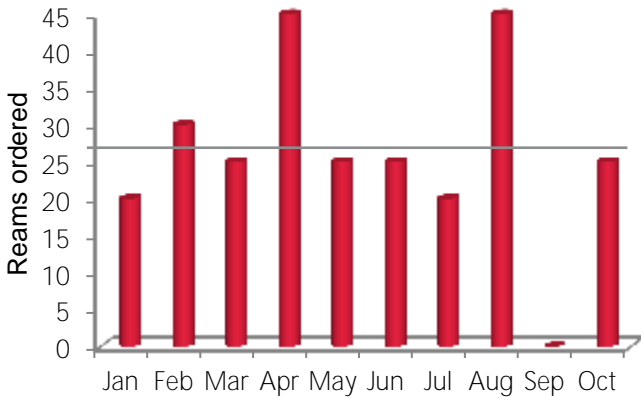
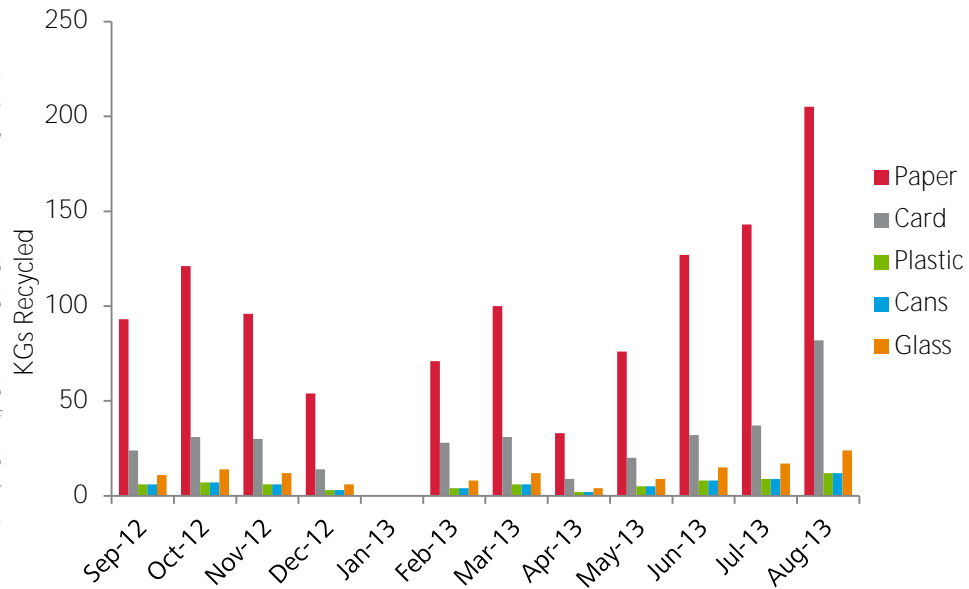


Waste and Recycling

We have reversed the decline in recycling seen last year. The business has in fact dramatically increased this across all recyclables.

The impact of the recycling bins and removal of personal bins has facilitated this increase.

Whilst paper recycling is impressive, the vast majority of this is printing. In the months from 1st August to 31st October 2013, Cititec printed 33,569 sheets.



Paper usage

Our usage of paper has remained constant over the year, with ordering being on average 26 reams (13,000 sheets) per month. This supports our increased recycling claims.

Electricity

Monthly electricity consumption per person has fluctuated across the year. At most being 20% below previous year and at times being the same. Overall the usage has decreased by the aimed for average of 5%.

However the focus is now on CO2 emissions per employee. This has also decreased.

With two screens now being on most desks and every employee having smart phones requiring charging, turning off both monitors and screens and unplugging chargers is becoming even more important.

